



www.seajayboats.com.au

EDITION 16

OPEN BOATS



SEA JAY ADVANTAGE

With over 70 models to choose from ranging in size from 3.15m to 6.3m Sea Jay has models to cover all boating enthusiasts. Our boats are made to the highest level of workmanship and come with Quality fittings and various options. Due to the quality of build you can also rest assured that with Sea Jay you are buying a boat that not only looks good but also has great Stability and Performance. High side and wide beams are available ensuring strength, protection and the all important space you require. Whether you are new to the water ways, a seasoned pro, expert fisherman or recreational boatie, Sea Jay will have a model for you. Models also available for the commercial sector.

Introduction

Boating has always played a major part in their family life spanning many years. Both Col and Janelle have been proactive in many aspects of boating including recreational fishing, tournament fishing (for the mighty Barra), water skiing and boat racing. Manufacturing aluminium boats became a natural progression into the boating industry although they never dreamed their “Sea Jay Aluminium Boats” brand would one day become a house hold name throughout Australia.

Joining his parents with their passion Troy Glass became an employee of the company in 1999. Completing his apprenticeship within the industry, Troy soon put his theoretical and practical knowledge to good use and became the manager of research and development. In 2010, Troy became a part owner of Sea Jay Boats further strengthening the family values associated within the company.

Constantly growing since its inception, the Sea Jay Boats factory now covers 7,000m² and with 2,280m² under roof, provides the necessary room to build Sea Jay’s pressed and plate range of aluminium boats.

QUALITY & WORKMANSHIP

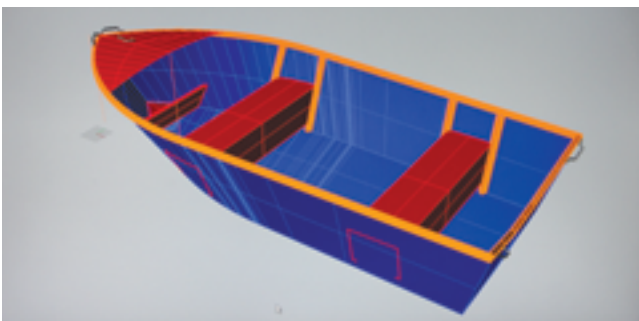
- Quality and pride in workmanship is an important aspect of the manufacturing process.
- Sea Jay ensures employees build their product with the pride of workmanship they would expect in a boat of their own. This motto is carried through the entire manufacturing process.
- Sea Jay employees receive on the job training by qualified personnel.
- A quality checking system is in place to check material and product at each stage throughout the manufacturing process. All attempts are made to provide a quality product to enter the market place.



RESEARCH & DEVELOPMENT

Our Research & Development department is responsible for innovations in products, design, construction and style. Completely managed at our factory, our R & D team are relentless in the pursuit of creating innovative new products to keep Sea Jay Aluminium Boats one step ahead of the competition. Some of the key elements focused on are as follows:

- New model research and advancement
- Source and incorporate new and innovative products
- Continual revision and enhancement of current models
- Refine and modernise production processes
- Acquire and learn new Technologies to improve hull design and function



CONTENTS

SQUARE NOSE

PUNT 4

V-NOSE

CREEK MASTA 5

NOMAD / NOMAD HS 6

OPEN BOAT

ANGLER 8

MAGNUM2 10

X PACK 2 11

MAGNUM XPACK 12

WARRANTY

14

GENERAL MAINTENANCE

15



Further Sea Jay Models available in the Sea Jay Deluxe Models Catalogue. Please ask your dealer or contact the factory for a copy. Brochure Downloads are also available on the website.

Commitment

Sea Jay bring their product to you with personal pride and trust you will enjoy many memorable moments on some of the best waterways this country has to offer. Only the highest quality marine grade aluminium and components are used to construct one of the most robust range of boats with a quality of finish enviable of other brands on the market today.

What a better way to relax by GETTING AMONGST IT in a quality Sea Jay Aluminium Boat you can rely on and trust.



SPECIFICATIONS	3.0	3.5	3.7	3.85	4.1
Bottoms (mm)	1.6	1.6	1.6	1.6	1.6
Sides (mm)	1.6	1.6	1.6	1.6	1.6
Beam (m)	1.32	1.52	1.52	1.52	1.66
Depth (m)	0.54	0.56	0.56	0.56	0.60
Floor Ribs	4	6	7	7	7
No. Of Persons S/S	2	2	3	3	3
No. Of Persons L/S	n/a	n/a	n/a	n/a	3
Weight Approx (kg)	60	79	81	87	111
Max Hp	3	10	10	15	20
Max Motor Weight (kg)	21	42	42	47	55

FEATURES

Bungs - 38mm	✓	✓	✓	✓	✓
Cast Platform (Part) - Forward Of Front Seat	opt	opt	opt	opt	opt
ForeDeck - Flat	✓	✓	✓	✓	✓
Handle - Front (Forward Off Gunwhale)	✓	✓	✓	✓	✓
Handles - Rear	✓	✓	✓	✓	✓
Rails - Front & Rear	opt	opt	opt	opt	opt
Rear Corner Gussets	✓	✓	✓	✓	✓
Rowlocks	✓	✓	✓	✓	✓
Towing Eye - Double	✓	✓	✓	✓	✓

TRANSOM

Transom Short Shaft	✓	✓	✓	✓	✓
Transom Long Shaft	n/a	n/a	n/a	n/a	✓

SEATS

Welded Thwart	✓	✓	✓	✓	✓
---------------	---	---	---	---	---

n/a = not available on this model

PUNT - SQUARE NOSE

When stability is paramount in a small boat, you cannot go past our Square Nose Punt range of tinnies. With a true flat bottom, our punt offers an extremely stable platform while creating minimal draft making it perfect for motoring through shallow water. The square nose punt is perfectly suited for crabbing, throwing a cast net and fishing which is why it still remains an old favourite with fishermen today.

For the latest & additional information on this model please visit www.seajay.com.au/punt/ or scan the QR Code with your Smart Phone



SPECIFICATIONS	3.5	3.7	3.85	3.98	4.18	4.38
Bottoms (mm)	1.6	1.6	1.6	2.0	2.5	3.0
Sides (mm)	1.6	1.6	1.6	1.6	2.5	2.5
Beam (m) HS	1.52	1.72	1.74	1.89	1.93	2.1
Depth (m) HS	0.76	0.81	0.81	0.88	1.05	1.105
Floor Ribs	5	7	8	9	10	10
No. Of Persons S/S	n/a	3	3	n/a	n/a	n/a
No. Of Persons L/S	3	4	4	4	4	4
Weight Approx (kg) HS	114	140	145	181	TBA	TBA
Max Hp	15	20	25	30	30	40
Max Motor Weight (kg)	47	55	73	84	84	120

FEATURES

Bungs - 38mm	✓	✓	✓	✓	✓	✓
Deck - Flat	✓	✓	✓	✓	✓	✓
Gunwhale Rubber Insert	-	-	-	✓	✓	✓
Handles - Front (Forward Off Gunwhale)	✓	✓	✓	✓	✓	✓
Handles - Rear	✓	✓	✓	✓	✓	✓
Rear Corner Gussets	✓	✓	✓	✓	✓	✓
Rope Shelf	✓	✓	✓	✓	✓	✓
Rowlocks	✓	✓	✓	✓	✓	✓
Short Side Pockets Starboard Side	✓	✓	✓	✓	✓	✓
Sounder Mount Plate	✓	✓	✓	✓	✓	✓
Spray Chines	✓	✓	✓	✓	✓	✓
Tank Rack - Carpeted	✓	✓	✓	✓	✓	✓
Towing Eye - Double	✓	✓	✓	✓	✓	✓
Transducer Bracket	✓	✓	✓	✓	✓	✓

FITTINGS

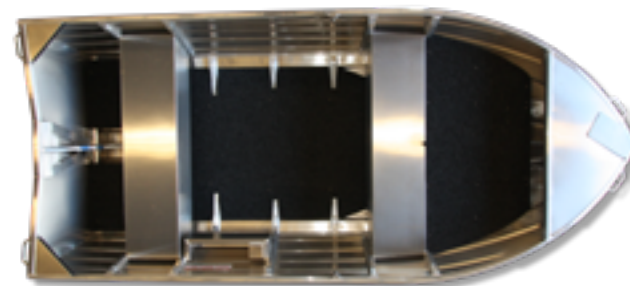
Battery Rack In Front Cast	✓	✓	✓	✓	✓	✓
Cast Deck (Part) With Hatch	✓	✓	✓	✓	✓	✓
Floor - 3/4 Carpeted Plywood	✓	✓	✓	✓	✓	✓
Minnkota Plate On Front Deck	✓	✓	✓	✓	✓	✓

TRANSOM

Short Shaft	-	✓	✓	-	-	-
Long Shaft	✓	✓	✓	✓	✓	✓

SEATS

Welded Thwart Front & Rear	✓	✓	✓	✓	✓	✓
----------------------------	---	---	---	---	---	---



CREEK MASTA HS - V NOSE

The CREEK MASTA is a v-nose model that is an extension from our standard nomad, taking this model to the next level. This models as the name suggests would be a good little boat for sleeking around the creeks and estuaries, with the part cast platform this gives a stable platform for flicking a lure, throwing a cast net or setting the crab pot. A minnkota plate on the front deck allows the use of an electric outboard and the part floor makes moving around a breeze. Take a look at the features and specifications of this model as it is sure to please.



For the latest & additional information on this model please visit www.seajay.com.au/creekmasta/ or scan the QR Code with your Smart Phone



NOMAD & NOMAD HS - V NOSE

Embark on an adventure today in a Sea Jay's premium car topper range, the Nomad. Our Nomad range has a unique v-nose entry that helps slice through swell and chop while the bottoms flatten out toward the transom allowing greater stability at rest. The smaller models make loading onto a roof rack, camper trailer or caravan effortless due to their flat deck and handles forward off the gunwhales. Not only does this prevent anything catching, but also reduces the risk of damaging both your boat and racking. Our Nomad HS (75mm higher sides) is also well suited for car topping and very appealing for the estuaries of the Top End.



NOMAD

SPECIFICATIONS	3.2	3.5	3.7	3.85
Bottoms (mm)	1.6	1.6	1.6	1.6
Sides (mm)	1.6	1.6	1.6	1.6
Beam (m)	1.43	1.48	1.67	1.69
Depth (m)	0.61	0.68	0.73	0.73
Floor Ribs	4	5	7	8
No. Of Persons S/S	2	2	3	3
No. Of Persons L/S	n/a	3	4	4
Weight Approx (kg)	70	77	92	102
Max Hp	8	15	20	25
Max Motor Weight (kg)	42	47	55	73

FEATURES

Bungs - 38mm	✓	✓	✓	✓
Deck - Flat	✓	✓	✓	✓
Handles - Front (Forward Off Gunwhale)	✓	✓	✓	✓
Handles - Rear	✓	✓	✓	✓
Rear Corner Gussets	✓	✓	✓	✓
Rope Shelf	✓	✓	✓	✓
Rowlocks	✓	✓	✓	✓
Spray Chines	✓	✓	✓	✓
Towing Eye - Double	✓	✓	✓	✓

TRANSOM

Short Shaft	✓	✓	✓	✓
Long Shaft	-	✓	✓	✓

SEATS

Welded Thwart	✓	✓	✓	✓
---------------	---	---	---	---

NOMAD HS

SPECIFICATIONS	3.5	3.7	3.85	3.98	4.18	4.38
bottoms (mm)	1.6	1.6	1.6	2.0	2.5	3.0
sides (mm)	1.6	1.6	1.6	1.6	2.5	2.5
beam (m)	1.52	1.72	1.74	1.89	1.93	2.1
depth (m)	0.76	0.81	0.81	0.88	1.05	1.105
floor ribs	5	7	8	9	10	10
no. of persons	3	4	4	4	4	4
weight approx (kg)	79	98	108	126	TBA	223
max hp	15	20	25	30	30	40
max motor weight (kg)	47	55	73	84	84	120

FEATURES

Bungs - 38mm	✓	✓	✓	✓	✓	✓
Deck - Flat	✓	✓	✓	✓	✓	-
Gunwhale Rubber Inserts	-	-	-	✓	✓	✓
Handles - Front (Forward Off Gunwhale)	✓	✓	✓	✓	✓	✓
Handles - Rear	✓	✓	✓	✓	✓	✓
Rear Corner Gussets	✓	✓	✓	✓	✓	✓
Rope Shelf	✓	✓	✓	✓	✓	✓
Rowlocks	✓	✓	✓	✓	✓	✓
Spray Chines	✓	✓	✓	✓	✓	✓
Towing Eye - Double	✓	✓	✓	✓	✓	✓

FLOORING

3/4 Floor	-	-	-	-	-	✓
-----------	---	---	---	---	---	---

TRANSOM

Short Shaft	✓	✓	✓	-	-	-
Long Shaft	✓	✓	✓	✓	✓	✓

SEATS

Welded Thwart	✓	✓	✓	✓	✓	✓
---------------	---	---	---	---	---	---



For the latest & additional information on this model please visit www.seajay.com.au/nomad/ or scan the QR Code with your Smart Phone





ANGLER - OPEN BOATS

Our Angler models are the start of our open boat line up. These smaller dinghies are perfect for the novice angler looking for their first boat as they are hassle free and easy to maintain. Light weight yet tough, these models are well suited for car topping if so desired with our 3.15 model being purpose built to be used as a tender. The Angler model offers an affordable boating option which is compact and nimble that will take you places other larger boats can't reach.

For the latest & additional information
on this model please visit
www.seajay.com.au/angler/
or scan the QR Code with your
Smart Phone



SPECIFICATIONS	3.15	3.55	3.75	3.85
Bottoms (mm)	1.6	1.6	1.6	1.6
Sides (mm)	1.6	1.6	1.6	1.6
Beam (m)	1.52	1.55	1.62	1.68
Depth (m)	0.65	0.81	0.88	0.9
Floor Ribs	5	6	6	7
No. Of Persons S/S	2	2	3	n/a
No. Of Persons L/S	n/a	3	3	4
Weight Approx (kg)	62	76	86	92
Max Hp	10	15	20	25
Max Motor Weight (kg)	42	47	55	73

FEATURES

Bungs - 38mm	✓	✓	✓	✓
Deck - Flat	✓	✓	✓	✓
Handles - Front(Forward Off Gunwhale)	✓	✓	✓	✓
Handles - Rear	✓	✓	✓	✓
Rear Corner Gussets	✓	✓	✓	✓
Rope Shelf	✓	✓	✓	✓
Rowlocks	✓	✓	✓	✓
Spray Chines	-	-	✓	✓
Towing Eye - Double	✓	✓	✓	✓

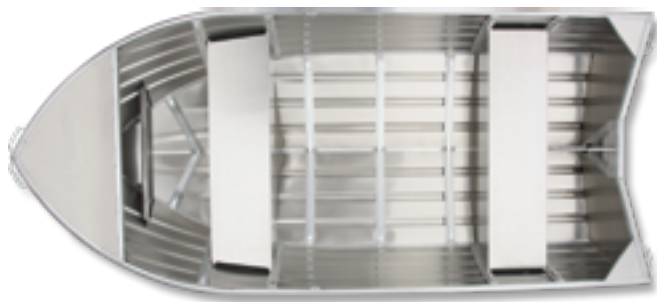
TRANSOM

Short Shaft	✓	✓	✓	n/a
Long Shaft	n/a	✓	✓	✓

SEATS

Riveted Thwart	-	-	-	-
Welded Thwart	✓	✓	✓	✓

n/a = not available on this model





For the latest & additional information on this model please visit www.seajay.com.au/magnum2/ or scan the QR Code with your Smart Phone



MAGNUM 2 - OPEN BOATS

The new era Magnum, traditionally a dinghy with two thwarts seats was a standard dinghy requirement, now a dinghy to meet our changing times.

The Magnum2 has plate sides and heavier bottoms as standard features of these models, please refer to your specifications for the varied combinations. The traditional two thwart seats are still featured. An anchorwell (plastic with drain) is a practical addition in the front deck, as well as a wide $\frac{3}{4}$ floor fitted between the seats, with a carpeted tank rack behind the rear thwart. Also to make life easier a rear step and rail on the portside has been fitted, as well as front rails and rear rails add to the features. Whether your boat is big or small, electronics is nearly always a requirement so a switch panel plate is fitted for this purpose.

SPECIFICATIONS	4.08	4.28	4.4
Bottoms (mm)	2.5	3.0	3.0
Plate Sides (mm)	2.5	2.5	3.0
Beam (m)	1.80	2.08	1.97
Depth (m)	0.95	1.05	1.00
Floor Ribs	7	8	10
No. Of Persons	4	4	4
Weight Approx (kg)	186	248	218
Max Motor Weight (kg)	84	120	120
Max Hp	30	40	40
FEATURES			
ADRENALIN HULL	-	✓	-
Bungs - 38mm	✓	✓	✓
Gunwhale Rubber Inserts	✓	✓	✓
Handle - Rear (Starboard Side)	✓	✓	✓
Rope Cleat	✓	✓	✓
Short Side Pockets	2	2	2
Spray Chines	✓	✓	✓
Step & Rail - Port Side	✓	✓	✓
Switch Panel Plate	✓	✓	✓
Tank Rack - Carpeted	✓	✓	✓
Towing Eye - Double	✓	✓	✓
Transducer Bracket	✓	✓	✓
FITTINGS			
Anchorwell - Plastic With Drain	✓	✓	✓
Cast - Front Part With Hatch	✓	✓	✓
Floor - $\frac{3}{4}$ Carpeted Plywood	✓	✓	✓
TRANSOM			
Long Shaft	✓	✓	✓
RAILS			
Short Front	✓	✓	✓
Rear Rails	✓	✓	✓
SEATS			
Welded Thwart Front & Rear	✓	✓	✓

SPECIFICATIONS	4.08	4.28	4.4
Bottoms (mm)	2.5	3.0	3.0
Plate Sides (mm)	2.5	2.5	3.0
Beam (m)	1.80	2.08	1.97
Depth (m)	0.95	1.05	1.00
Floor Ribs	7	8	10
No. Of Persons	4	4	4
Weight Approx (kg)	204	254	245
Max Motor Weight (kg)	84	120	120
Max Hp	30	40	40

FEATURES

ADRENALIN HULL	-	✓	-
Bungs - 38mm	✓	✓	✓
Gunwhale Rubber Inserts	✓	✓	✓
Handle - Rear (Starboard Side)	✓	✓	✓
Rope Cleat	✓	✓	✓
Short Side Pockets	2	2	2
Spray Chines	✓	✓	✓
Step & Rail - Port Side	✓	✓	✓
Switch Panel Plate	✓	✓	✓
Tank Rack - Carpeted	✓	✓	✓
Towing Eye - Double	✓	✓	✓
Transducer Bracket	✓	✓	✓
Wide Side Decks	✓	✓	✓

FITTINGS

Anchorwell - Plastic With Drain	✓	✓	✓
Cast - Front Part With Hatch	✓	✓	✓
Floor - Part Carpeted Plywood	✓	✓	✓

TRANSOM

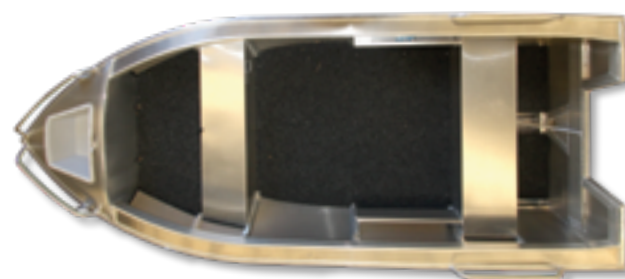
Long Shaft	✓	✓	✓
------------	---	---	---

RAILS

Short Front	✓	✓	✓
Rear Rails	✓	✓	✓

SEATS

Welded Thwart Front & Rear	✓	✓	✓
----------------------------	---	---	---



XPACK 2 - OPEN BOATS

Built on the foundation of our Magnum2 range, our Xpack2 series comes standard with additional features that further enhance the usability of these models. Wide side decks have been fitted for greater strength but also to allow for rod holders to be fitted with ease. A large rear step and rail has also been added providing ease of entry especially when pushing off from a boat ramp by yourself. A switch panel plate comes standard, ready for when you want to wire up your lights and bilge pump and the front handles have been replaced with rails for a more polished look.

Xpack, practical options that work!

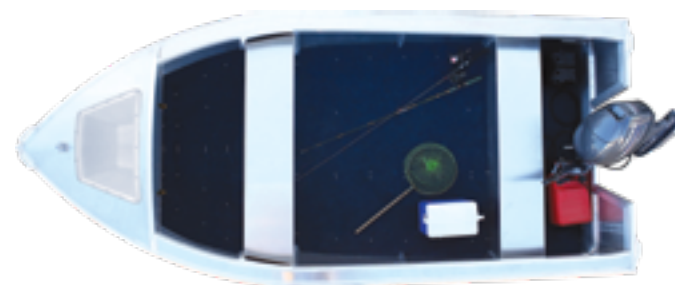


For the latest & additional information on this model please visit www.seajay.com.au/xpack2/ or scan the QR Code with your Smart Phone



MAGNUM XPACK - OPEN BOATS

The Magnum X Pack ranges extends to our larger open boat models that are built as a robust aluminium dinghy providing years of trouble free boating. Wide beams are a standard feature through the Magnum range producing a stable platform with high sides creating added safety especially when children are on board. All models 4.55 and up boast our Sure Trac Hull for enhanced performance as well as 3mm bottoms and 3 mm plate sides for extra strength and durability. With a model to suit even the budget conscious, our larger Magnum X Pack range will help make your boating experience a memorable one.



SPECIFICATIONS	4.55	4.85	5.35	6.0
Bottoms (mm)	3.0	3.0	3.0	4.0
Plate Sides (mm)	3.0	3.0	3.0	3.0
Beam (m)	2.05	2.14	2.2	2.3
Depth (m)	1.08	1.09	1.10	1.18
Floor Ribs	11	13	14	16
No. Of Persons	5	5	6	6
Weight Approx (kg)	TBA	TBA	373	TBA
Max Motor Weight (kg)	120	120	160	175
Max Hp	50	60	70	75

FEATURES

SURETRAC HULL - Reverse Chine	✓	✓	✓	✓
Bungs - 38mm	✓	✓	✓	✓
Gunwhale Rubber Inserts	✓	✓	✓	✓
Handle - Rear (Starboard Side)	✓	✓	✓	✓
Rope Cleat	✓	✓	✓	✓
Short Side Pockets	2	2	2	2
Spray Chines	✓	✓	✓	✓
Step & Rail - Port Side	✓	✓	✓	✓
Switch Panel Plate	✓	✓	✓	✓
Tank Rack - Carpeted	✓	✓	✓	✓
Towing Eye - Double	✓	✓	✓	✓
Transducer Bracket	✓	✓	✓	✓
Wide Side Decks	✓	✓	✓	✓

FITTINGS

Anchorwell - Plastic With Drain	✓	✓	✓	✓
Cast - Front Part With Hatch	✓	✓	✓	✓
Floor - Part Carpeted Plywood	✓	✓	✓	✓

TRANSOM

Long Shaft	✓	✓	✓	✓
------------	---	---	---	---

RAILS

Short Front	✓	✓	✓	✓
Rear Rails	✓	✓	✓	✓

SEATS

Welded Thwart Front & Rear	✓	✓	✓	✓
----------------------------	---	---	---	---



For the latest & additional information
on this model please visit
www.seajay.com.au/magnum/
or scan the QR Code with your
Smart Phone

Warranty

Sea Jay Group Pty Ltd A.C.N. 141 380 298

This document states terms of the Warranty given by the Company in respect of products manufactured by it.

1. INTERPRETATION

In this document:-

- 1.1 "The Company" means Sea Jay Group Pty Ltd A.C.N. 141 380 298.
- 1.2 "The Purchaser" means the original person or entity of any boat sold through an authorised Sea Jay Boats Dealership.
- 1.3 "Boat" means any aluminium boat or accessory manufactured by the Company.
- 1.4 "Warranty Period" means the period of two years (24 months) from the date of delivery to the ORIGINAL purchaser.

2.0 WARRANTY

- 2.1 The Company warrants to the Purchaser that:-
 - 2.1.1 The quality of the materials used in the construction of the boat is in accordance with or above, the standard usual in the aluminium boat building industry; and
 - 2.1.2 The boat will remain free of defects during the warranty period.

3.0 WORKS UNDER WARRANTY

- 3.1 To obtain the benefit of the warranty the Purchaser must return the boat to its place of purchase.
- 3.2 Warranty does not cover any consequential expenses beyond the warranty repair itself. Eg. Freight
- 3.3 Sea Jay Boats shall not be liable for consequential loss of any kind arising out of the supply or operation of the Boat.

4.0 EXCLUSIONS

- 4.1 The warranty will not cover any defect or damage caused by:-
 - 4.1.1 Operating outside design limitations
 - 4.1.2 Misuse, abuse or negligence
 - 4.1.3 Normal Wear and Tear
 - 4.1.4 Use of a motor which has more power or weight than recommended on the compliance plate attached to the Boat.
 - 4.1.5 Improper Trailer fitup. Eg. Incorrect tie down of Boat to Trailer, no Engine support bracket and off road use.
- 4.2 Paint is not warranted against the effects of oxidisation, wear and tear, electrolysis or damage caused by fuel and dissimilar metals. This also includes normal oxidization around unsealed edges and fittings.
- 4.3 Factory fitted parts, fittings or extras are subject to a 1 year (12 month) limited warranty only. Such items include:- Vinyl Wraps, Carpet, Upholstery, Pre-Rigging and Windscreens (including console screens) etc, etc.
- 4.4 Vinyl Wraps are warranted against defective application, NOT against Damage caused by solvent/ petrol etc or damage due to misuse
- 4.5 Any alterations / modifications to the Boat once it has left the factory will void any/all remaining warranty.

5.0 COMMERCIAL USE

- 5.1 Due to the variance in usage and conditions which may be experienced, the Purchaser must be satisfied the intended Boat is suited for commercial applications.
- 5.2 This Warranty does not cover any boat which has been used for a commercial purpose.

6.0 EXCLUSION OF FURTHER WARRANTIES

- 6.1 Except as stated in this document, no warranty express or implied is given by the Company except any warranty which is implied by law.



General Maintenance

It is important to follow a few basic rules in providing regular maintenance to your new vessel.

- Always thoroughly wash your entire vessel with fresh water and mild detergent after use.
- A spray of a protective lanolin based product should be re-applied after washing, to all areas where dissimilar metals are fitted. eg. Any Stainless Steel fittings (Windscreen Bolts, Rod Holders, Baitboard etc.)
- If an accessory is fitted after market (not factory fitted) it is important to spray a protective lanolin based product to these areas where salt or moisture can be attracted.
- Leave your vessel permanently tilted to drain after use.

More Detailed information is available within our Owners Manual.



DEALER NETWORK

Our National Dealer Network will provide you with updated information and marketing of our product. As fishing and boating needs differs in various parts of our nation, our Dealer Network will provide the right product for their area. However if your needs call for a variation. Sea Jay have a range of optional accessories and fittings to meet your needs.

DISCLAIMER

As Sea Jay continues to make improvements to our product, we do reserve the right to change any details that are contained herein.

All specifications quoted are approximate and subject to change.

Please note that photos may show accessories or options that are not standard, please check the features for the standard options applicable.

For further information on the Sea Jay Model range please contact your authorised Dealer as Sea Jay Aluminium Boats do not sell our Pressed Range direct from the factory.

www.seajayboats.com.au

OPEN BOATS

PRINTED NOVEMBER 2020

For more information, contact your authorised Sea Jay Boats dealer



2 Maddison Court, Bundaberg Qld 4670 | Ph: 07 4152 2111